



Oil Spill Equipment | Floating Barriers | Incinerators



The new Elastec logo represents the simplicity and strength of our environmental technology.

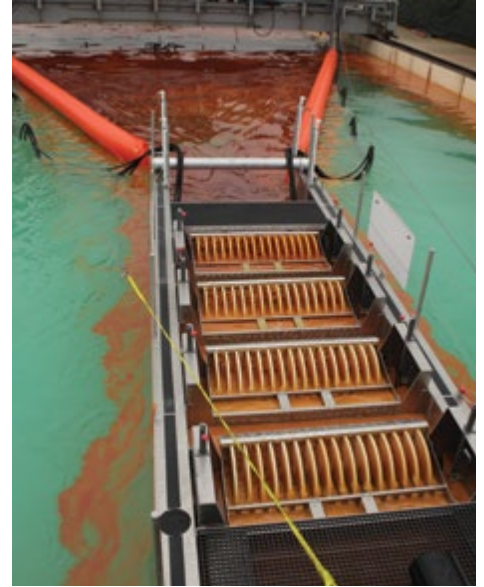


In 1990, in the heart of the Illinois Oil Basin, Elastec was established around a simple device to clean up oil spills on water. The ELASTEC Drum Skimmer became the most innovative oil skimming mechanism in the environmental response market.



Twenty-five years later, Elastec's product line expanded to include a variety of skimmers, oil containment boom and related accessories for inland and offshore spill incidents. Over the years, more environmental technologies were added to dispose of medical waste and non-hazardous materials, as well as floating barriers to protect our water.

At Elastec, we look forward to developing practical and innovative technologies to protect our environment - inspired with the promise of a cleaner world for future generations.



ELASTEC

1 9 9 0 **25** 2 0 1 5

GROOVED DISC SKIMMERS

www.elastec.com



X150 SKIMMER

The ELASTEC X150 is an advancing grooved disc skimmer based on the award-winning technology from our Wendy Schmidt Oil Cleanup X CHALLENGE prototype. Tested at Ohmsett in 2012, the X150 offers high recovery rates and is easily towed by smaller vessels. The X150 recovers oil - in stationary and advancing modes - from zero to three knots.

Recovery Rate*	672 gpm / 152 m ³ h
Recovery Efficiency	95.3%

*Tested at the Ohmsett test facility according to ASTM F2709. Nameplate capacity verified by the U.S. Coast Guard.



The ELASTEC X Skimmer Launching System is easily operated by three people. The launcher does all the heavy lifting by hydraulically telescoping the X150 skimmer from the stern of the vessel, gently hoisting and winching it into the ocean.

The self-contained launching system is wirelessly remote controlled and includes the launcher, X150 skimmer, boom, reel, BoomVane™ and power pack. Hydraulic and discharge hoses are built into the sweep boom, eliminating external umbilicals. The complete system fits into a 20 ft container for rapid global shipment. (See back cover for full system deployment.)



Height	30 inch / 760 mm	20 inch / 508 mm
Flotation Chamber	12 inch / 300 mm	8 inch / 203 mm
Skirt	18 inch / 450 mm	12 inch / 305 mm
Tension Cable	1/4 inch / 6 mm Stainless Cable	
Ballast Chain	3/8 inch / 8 mm Galv. Steel Chain	1/4 inch / 6 mm Galv. Steel Chain
Weight	8.1 lb/ft / 12 kg/m	
Section Length	50 ft / 15 m	

AMERICAN FIREBOOM

ELASTEC American Fireboom employs a unique high temperature resistant core and ceramic fabric components that retain their integrity from -65°F / -54°C to more than 2,000°F / 1,093°C . It is comprised of stainless steel knitted mesh, ceramic flotation, built-in stainless steel tension cable and covered with sacrificial PVC fabric. American Fireboom can be used in a protective role (keeping burning oil away from assets) or dynamic controlled burning operations. It is packaged in crates, containers or airborne pallets.

SAFE START IGNITER

The ELASTEC Safe Start Igniter is designed to provide a safe and easy way to start controlled burns for oil spill control. Each one gallon / 3.8 litre container is preloaded with non-toxic Safe Start gelling agent to be mixed with diesel fuel.





HYDRO-FIRE® BOOM

ELASTEC Hydro-Fire® Boom is a state-of-the-art inflatable fire boom. It is a complete system with 500 ft / 150 m of boom on a powered reel including an air blower, hoses, towing equipment, power pack and two high capacity water pumps. Elastec fire booms undergo rigorous testing. Both Hydro-Fire® Boom and American Fireboom systems were utilized during the Gulf of Mexico oil spill in 2010 and accounted for the longest burns* and greatest amount of oil removed per system. Over 90,000 ft / 27 km of our fire boom has been supplied around the world.

Hydro-Fire® Boom systems collected the most oil and were responsible for the highest volume of oil burns per system.**

*Holder of the GUINNESS WORLD RECORDS® title for the Longest Continuous Oil Spill Burn at Sea.

**BP Report "Fireboom Performance Evaluation, Nov. 2010"



BOOMVANE™ SPRAY

The ELASTEC BoomVane™ Spray system can be deployed from small service vessels - such as coastal fishing boats, pilot and workboats - to be used for dispersant application on marine oil spills.

- Wider spray width than conventional arms (65 ft / 20 m).
- Dispersant is applied at the correct droplet size and height for effective dispersion of the oil.
- Dispersant is applied well away from the towing vessel and personnel.
- Dispersant can be applied near-shore without putting the vessel at risk (ideal for deep and high energy shorelines).
- High application accuracy.



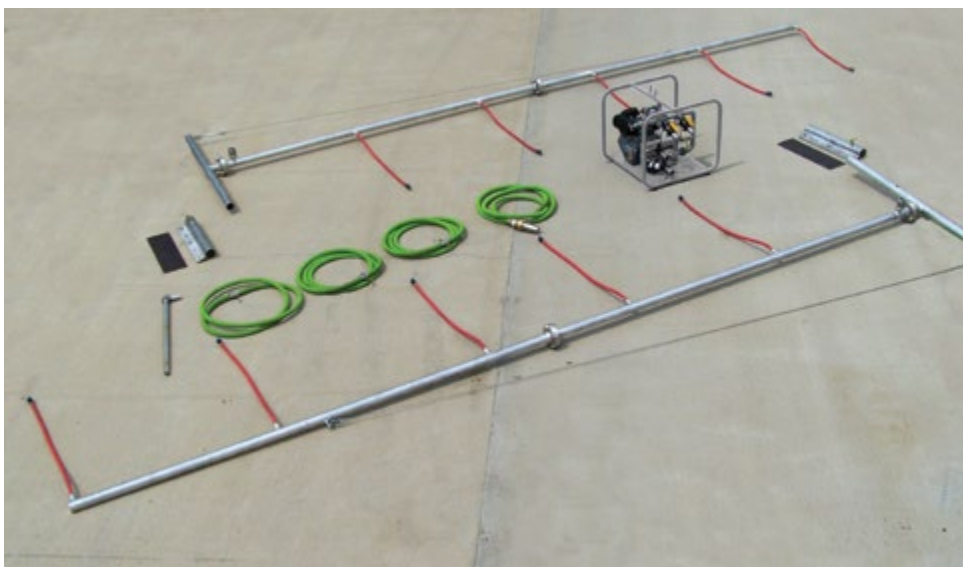
Display model shown



NEATSWEEP®

ELASTEC NeatSweep® is an oil spill dispersant application system that provides a large encounter rate for oil spilled on water.

The dispersant pump automatically detects the speed of the towing vessel and self-adjusts the spraying rate according to pre-set parameters. A mixing panel is towed behind the dispersant application zone (DAZ) to help mix the oil spill dispersant with the oil on the water's surface.



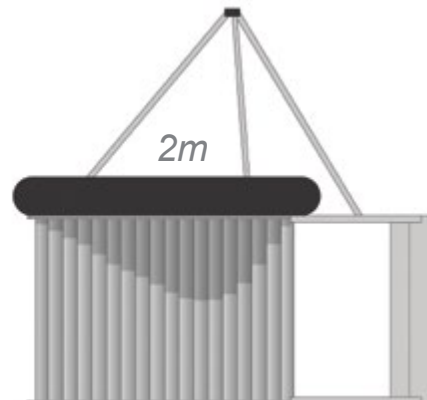
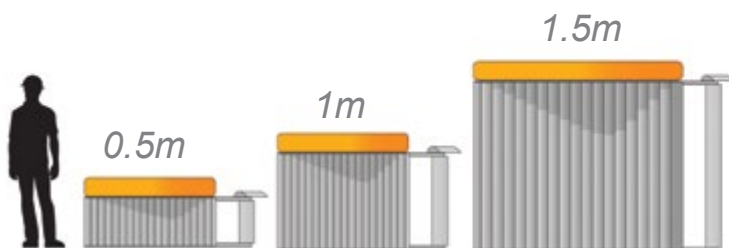
ELASPRAY

ELASTEC ElaSpray is designed for easy installation on tugboats, offshore supply vessels or other types of vessels. The system contains a compact diesel engine driven pump for spraying diluted or neat dispersant. A set of two marine grade aluminum spray arms are mounted on the supporting post and secured by the topping wires. Each standard spray arm is mounted with five spray nozzles.



0.5m BOOMVANE™

The ELASTEC 0.5m BoomVane™ is designed for shore-based, fast-water river operations in shallow waters (less than 3 ft / 1 m), allowing for deployment of boom without boats. Booms and absorbents may also be deployed with the BoomVane™ from a towing vessel, near the shoreline, where it may be too shallow for the vessel.





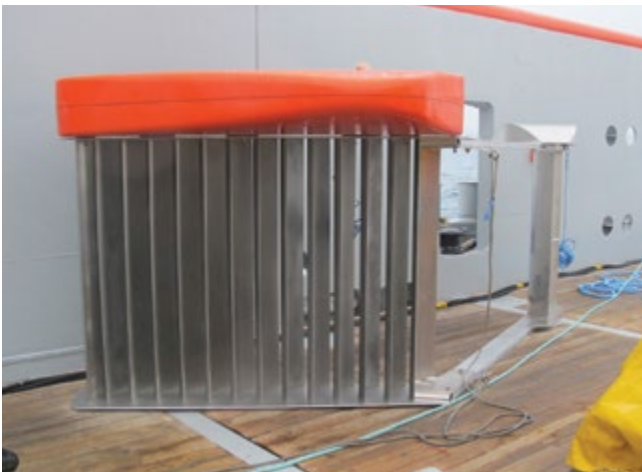
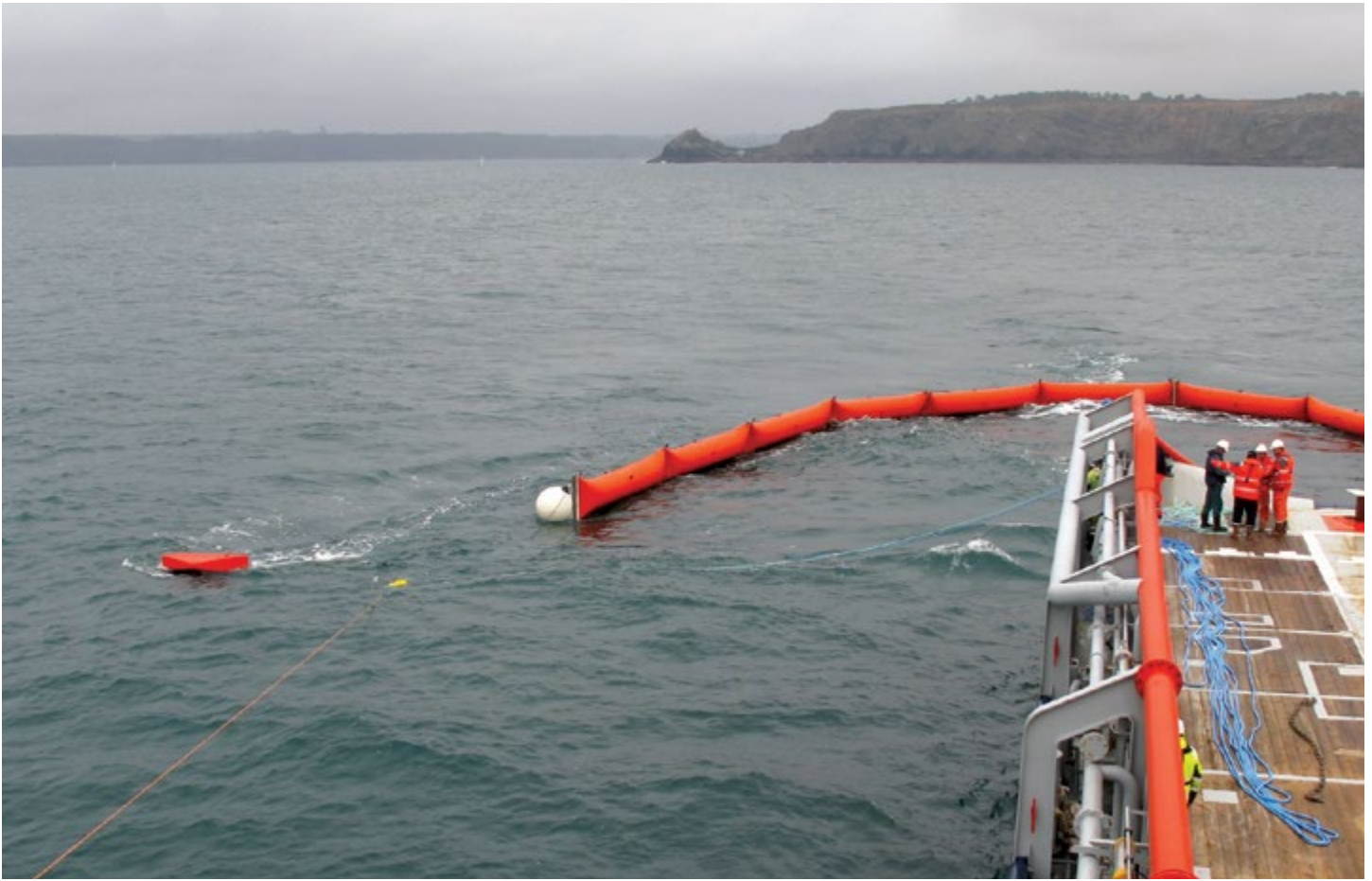
1m BOOMVANE™

The ELASTEC 1m BoomVane™ is designed for both shore-based and vessel sweep applications, to deploy shallow and medium draught oil booms as well as containment and recovery systems in rivers and coastal waters.

This extremely versatile model is capable of deployment in fast rivers with minimal manpower needed.

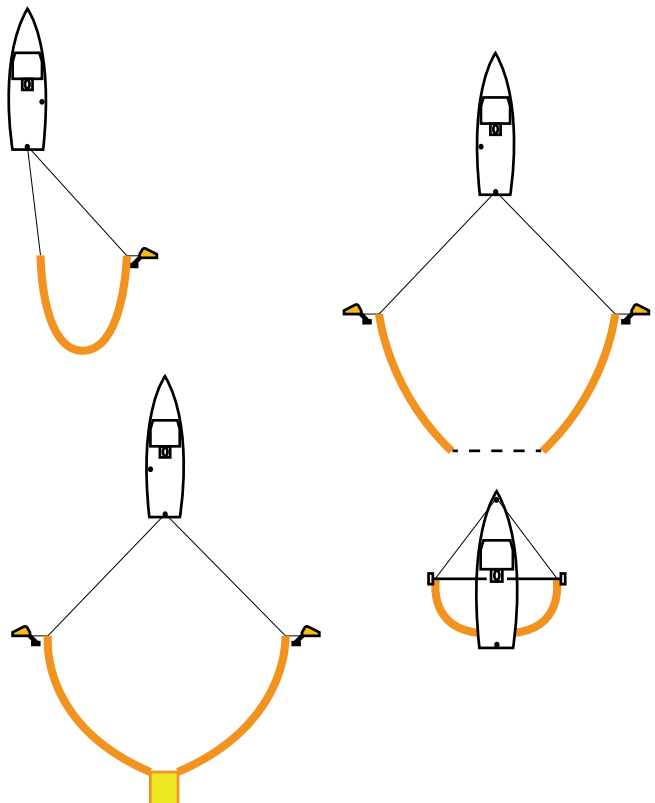


1m BoomVane™ can be utilized in open water for the deployment of large response systems including the ELASTEC NeatSweep® Dispersant System and the ELASTEC X Skimmer Launching System.



1.5m BOOMVANE™

The ELASTEC 1.5m BoomVane™ is designed for vessel sweep applications to deploy larger oil booms as well as containment and recovery systems in coastal and open waters. The BoomVane™ is completely stable and self-trimming in all sweep speeds. It is insensitive to wave action. The BoomVane™ allows boom to be deployed in various modes and configurations.



ELASTEC 1.5m BoomVane™ Towing Configurations



2m BoomVane™ shown with optional docking plate for lifting



2m BOOMVANE™

The ELASTEC 2m BoomVane™ is designed for coastal and offshore single vessel operations with medium to large oil booms and advancing containment and recovery systems.

The 2m BoomVane™ enables a single vessel to operate a wide swath sweep with offshore oil booms, in various modes and configurations.



“BoomVane™ combines the science of sailing a boat with the art of flying a kite.”

-Magnus Claeson,
BoomVane™ Inventor



MINIMAX

The ELASTEC MiniMax is manufactured in high density polyethylene, making it resistant to many chemicals found in industrial pits, sumps, separators and tanks. Special versions are available for high temperature and highly acidic environments.

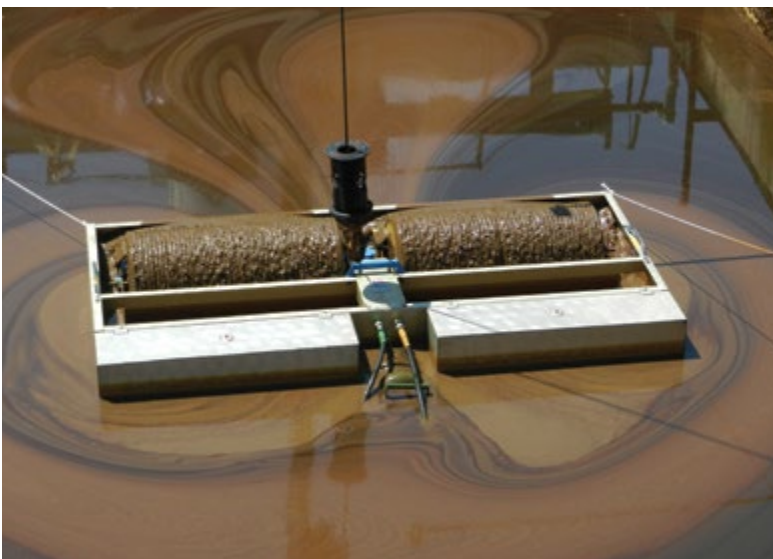
Recovery Rate	20 gpm / 5 m ³ h
Weight	50 lb / 23 kg
Dimensions	42 x 28 x 14 inch 1.07 x 0.71 x 0.36 m
Application	Industrial



TDS118

The ELASTEC TDS118 is available in pneumatic or hydraulic drive for oil spill response or industrial use. Due to its shallow draft and light weight, this practical skimmer is ideal for cleanup in creeks, rivers and lakes.

Recovery Rate*	90 gpm / 20 m ³ h (Grooved Drums)
Weight	83 lb / 37.6 kg
Dimensions	53 x 41 x 18 inch 1.33 x 1.02 x 0.46 m
Application	Industrial, Inland, Harbor



TDS136

The ELASTEC TDS136 is widely used in continuous-duty industrial applications. This lightweight skimmer mixes high recovery rates with high portability, as it can be easily handled by two people.

Recovery Rate*	170 gpm / 38 m ³ h (Grooved Drums)
Weight	135 lb / 61 kg
Dimensions	92 x 42 x 18 inch 2.34 x 1.07 x 0.46 m
Application	Industrial, Inland, Harbor, Coastal



MAGNUM 100

The ELASTEC Magnum 100 is suited for larger spills in rivers, lakes and harbors. The four drums provide more stability in open water.

Recovery Rate*	251 gpm / 56 m ³ h (Grooved Drums)
Weight	202 lb / 92 kg
Dimensions	71 x 57 x 26 inch 1.80 x 1.77 x 0.66 m
Application	Industrial, Harbor, Coastal



MAGNUM 200

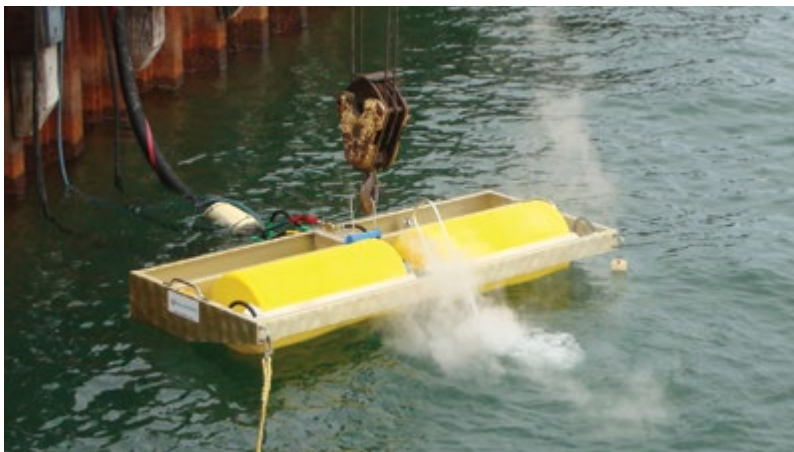
The ELASTEC Magnum 200 can be deployed from boats for open water response. In the photo, a Wave Breaker is attached which increases the freeboard of the skimmer.

Recovery Rate	400 gpm / 90 m ³ h (Grooved Drums)
Weight	300 lb / 136 kg
Dimensions	71 x 97 x 26 inch 1.80 x 2.50 x 0.70 m
Application	Industrial, Coastal, Open Water

Elastec oil skimmers use a patented design in which the rotating drums are used both as collection units and floats. This eliminates the need for heavy, bulky and expensive auxiliary flotation units and frames.



*Tested at the Ohmsett test facility according to ASTM F2709. Nameplate capacity verified by the U.S. Coast Guard.



STEAM HEAT SYSTEM

Our Drum Skimmers are available with a Steam Heating System for cold environments. Steam coils can be installed in the collection troughs on new or existing skimmers. The heat transferred by the steam helps the skimmer to function by melting the snow and ice surrounding the skimmer, allowing the oil to flow onto the collection drums. It also warms the oil that is being picked up, aiding the flow to the transfer pump and preventing the hoses from freezing.

SKIMMER SYSTEMS

We can provide a full package of matched components - skimmer, pump and power unit. Alternatively, we can supply the skimmer head alone (typically with pneumatic drive). We offer a range of pumps to suit the application.



Diesel hydraulic power pack, skimmer, submersible oil pump, hydraulic hoses, discharge hose and hose floats



Pneumatically operated skimmer with diaphragm pump, air supply hoses and suction / discharge hose



Electric hydraulic power pack, skimmer head and hydraulic hoses



SEASKATER

ELASTEC SeaSkater is a high capacity, self-adjusting weir skimmer featuring large diameter floats and lightweight design. Its high buoyancy and tubular aluminum frame allow for excellent wave conformance.

Recovery	520 gpm / 118 m ³ h
Weight	215 lb / 98 kg
Dimensions	90 inch diameter x 28 inch 2.28 m diameter x 0.71 m

SeaSkater is also available without a pump for use with vacuum systems.



OCEANSKATER

ELASTEC OceanSkater is a larger version of Elastec's proven SeaSkater system. Offering higher recovery rates and a broader footprint, the OceanSkater maneuvers large waves and rough conditions.

Recovery	1,300 gpm / 300 m ³ h
Weight	413 lb / 187 kg
Dimensions	145 inch diameter x 40 inch 3.68 m diameter x 1.02 m



SHOVELHEAD

ELASTEC ShovelHead is a floating suction head that can be attached to any suitable suction pump. The suction skimmer head is manufactured in molded polyethylene and can recover light oils or liquids from the water surface. The head has a draft of only 2 inch / 50 mm, enabling it to operate in very shallow water.

Recovery	Variable
Weight	26 lb / 11.7 kg
Dimensions	47 x 28 inch 1.19 x 0.7 m



The ELASTEC Circus River Skimmer is an in-line oil skimmer that is coupled with river boom and harnesses water flow to separate the oil and water. The skimmer has a circular chamber that accumulates the oil and allows the water to exit the bottom. It is ideal for fast river conditions. Tested at Ohmsett, it was able to recover 90% of oil at two knots.

PORTABLE TANKS



ELASTEC Towable Bladders (above) are temporary collapsible liquid storage containers that can be used to store oil or liquids. Supplied with a tow bridle and carry bag, several sizes are available.

ELASTEC QuickTank has a robust aluminum frame that supports the open top liner. A choice of fabrics and sizes make the QuickTank an affordable solution.

The ELASTEC Deck Tank (right) offers a fully enclosed tank with an aluminum frame and multiple tie down options for secure usage on a ship deck during rolling seas.





Elastec offers a wide range of hydraulic power packs to operate boom reels, oil skimmers and pumps. Power packs are available with both diesel or electric drives. The electric models may also be delivered in explosion proof configuration for use in oil refineries and other hazardous locations. ATV tires and tracks are available for towing in remote locations.



Elastec manufactures a range of pumps for stand-alone use or in conjunction with our skimmer systems.



Submersible Pumps



Peristaltic Pumps



Self-Priming Centrifugal Pumps



High Capacity Water Pumps



28 FT WORKBOAT

For fast response in oil spills, rescue, fire fighting or transport, the robust hull can carry a range of loads. It offers a large deck area combined with a bow ramp to easily load equipment to and from the shore.



ELASTEC Workboats are custom-built for:

- Oil Spill Response
- Marine Debris Collection
- Dive Platform
- Navigation Aids
- Marine Research
- Water Taxi/Crew Boat
- Dam & Impoundment Maintenance
- Construction & Freight Cargo Transportation
- Movie Industry
- Law Enforcement
- Fire Fighting
- Search & Rescue



26 FT WORKBOAT

ELASTEC Workboats can be custom-built with options including structural upgrades, navigation and electronic systems, on-board hydraulic power unit, toe hold/tie-down bar, lighting systems and other preferences. Workboats can also be designed to fit into standard shipping containers for fast and easy transport.





KVICHAK/MARCO FILTERBELT BOAT

The 30 ft ELASTEC Kvichak/MARCO Filterbelt boat is a rapid response skimming vessel that can operate in protected waters such as ports, harbors, rivers and inland environments. The system screens debris and entrained solids from the oil, which is then retained on board in recovered oil tanks. This vessel is also the main component of Elastec's Rapid River Response System (R³S). The R³S assembly consists of a Kvichak/MARCO Filterbelt vessel, two .5m BoomVanes™, two 150 ft / 46 m legs of OptiMax boom and a towable bladder.



ROZEMA 47 FT OSRV

The Rozema 47 ft Oil Spill Response Vessel is the latest high-speed, high-volume oil spill response vessel available with Elastec's award-winning, breakthrough grooved disc skimming technology. Equipped with dual inboard ELASTEC X30 cassettes, the Rozema 47 ft (14m) is a fully functional, multi-purpose emergency response boat capable of recovering 260 gallons of oil per minute (60 cu. m/hour) with a 90% recovery efficiency.



TRASH COLLECTION BOAT

The ELASTEC Trash Collection Boat is a multi-function craft designed to retrieve marine litter and debris. The vessel offers a functional working platform for waterway maintenance duties, cargo hauling, dive support and oil spill response.

- Wheeled fendering allows craft to be driven along harbor walls where trash and debris are most likely to collect.
- Pod system allows heavy items to be loaded directly on the quayside and lifted onto the boat via crane.

OIL & DEBRIS COLLECTION (ODC)

Elastec offers a range of catamaran workboats for skimming oil and debris. These versatile crafts recover trash as well as oil. They incorporate unique oil recovery chambers fitted into the boat's hull. These workboats also store and transport recovered oil and debris. Built according to international workboat standards, the hull is optionally certified by Lloyd's Register.



Elastec’s Floating Barrier Division (formerly American Marine) was established in 1967. Booms and barriers for offshore, near shore, fast current and calm water applications are built for temporary and permanent installations.

Small curtain booms are lightweight and easily transported in trucks or small containers for rapid deployment. Curtain booms are fitted with a cylindrical closed cell foam flotation and a galvanized ballast chain. Our booms conform to ASTM standards and United States CFR requirements according to water body.



Model	SuperStream	SuperSwamp	SwiftWater	Simplex			
Height	8 in / 200 mm	10 in / 250 mm	10 in / 250 mm	12 in / 300 mm	18 in / 460 mm	20 in / 500 mm	24 in / 610 mm
Freeboard	3 in / 76 mm	4 in / 100 mm	4 in / 100 mm	6 in / 150 mm	6 in / 150 mm	8 in / 200 mm	10 in / 250 mm
Draft	5 in / 120 mm	6 in / 150 mm	6 in / 150 mm	6 in / 150 mm	12 in / 300 mm	12 in / 300 mm	14 in / 360 mm
Top Tension	N/A	N/A	3/16 in / 5 mm Galv. Cable	Optional			
Bottom Tension	3/16 in / 5 mm Galv. Steel Chain	3/16 in / 5 mm Galv. Steel Chain	3/16 in / 5 mm Galv. Steel Chain	1/4 in / 6 mm Galv. Steel Chain			5/16 in / 8 mm Galv. Steel Chain
Weight	0.5 lb/ft 0.74 kg/m	0.8 lb/ft 1.1 kg/m	0.8 lb/ft 1.1 kg/m	1.68 lb/ft 2.49 kg/m	1.7 lb/ft 2.5 kg/m	1.8 lb/ft 2.67 kg/m	2.2 lb/ft 3.3 kg/m
Actual Breaking Strength	1,800 lb / 818 kg	1,800 lb / 818 kg	5,800 lb / 2,630 kg	5,000 lb / 2,273 kg			



ELASTEC OptiMax booms are designed for rivers, streams, estuaries and near shore environments. OptiMax II conforms to OPA-90 specifications for protected water and fast current. OptiMax booms are fitted with top cables that provide the high tensile strength required for towing and fast water applications.



OptiMax



SuperMax



OptiMax I		OptiMax II		SuperMax I	SuperMax II
13 in / 330 mm	19 in / 480 mm	14 in / 350 mm	20 in / 500 mm	36 in / 910 mm	42 in / 1,060 mm
7 in / 180 mm	7 in / 180 mm	8 in / 200 mm	8 in / 200 mm	12 in / 300 mm	15 in / 380 mm
6 in / 150 mm	12 in / 300 mm	6 in / 150 mm	12 in / 300 mm	24 in / 610 mm	27 in / 680 mm
5/16 in / 8 mm Galv. Steel Chain		1/4 in / 6 mm Stainless Cable		Optional	5/16 in / 8 mm Stainless Cable
5/16 in / 8 mm Galv. Steel Chain		5/16 in / 8 mm Galv. Steel Chain		3/8 in / 10 mm Galv. Steel Chain	1/2 in / 12 mm Galv. Steel Chain
2.2 lb/ft 3.3 kg/m	2.3 lb/ft 3.4 kg/m	2.3 lb/ft 3.4 kg/m	2.4 lb/ft 3.6 kg/m	2.9 lb/ft 4.4 kg/m	4.2 lb/ft 6.3 kg/m
6,400 lb / 2,900 kg		6,400 lb / 2,900 kg		12,500 lb / 5,669 kg	16,500 lb / 7,500 kg



Model	EconoMax	MiniMax
Height	16 in / 400 mm	17 in / 430 mm
Freeboard	6 in / 150 mm	6 in / 150 mm
Draft	10 in / 250 mm	11 in / 280 mm
Top Tension	N/A	3/16 in / 5 mm Galv. Steel Chain
Bottom Tension	3/16 in / 5 mm Galv. Steel Chain	3/16 in / 5 mm Galv. Steel Chain
Weight	1.2 lb/ft 1.8 kg/m	1.2 lb/ft 1.8 kg/m
Actual Breaking Strength	1,800 lb 818 kg	6,400 lb 2,909 kg



Elastec fence booms are ideal for rapid deployment and containment in a variety of applications. This style of boom has low storage volume and can be stored on pallets or on reels. This system is especially useful for ports and harbors where a quick response is required. Fence booms feature closed cell foam buoyancy panels, vertical stiffeners, galvanized chain ballast, stainless steel top tension cable plus a choice of fabrics, handles and anchor points.

Model	MaxiMax				
Height	25 in / 635 mm	30 in / 760 mm	36 in / 910 mm	42 in / 1,060 mm	44 in / 1,100 mm
Freeboard	8 in / 200 mm	10 in / 250 mm	11 in / 280 mm	15 in / 380 mm	15.75 in / 400 mm
Draft	17 in / 430 mm	20 in / 510 mm	25 in / 635 mm	27 in / 680 mm	27.5 in / 700 mm
Top Tension	1/4 in / 6 mm Stainless Cable			5/16 in / 8 mm Stainless Cable	
Bottom Tension	3/8 in / 10 mm Galv. Steel Chain			1/2 in / 12 mm Galv. Steel Chain	
Weight	2.2 lb/ft 3.3 kg/m	2.6 lb/ft 3.9 kg/m	2.8 lb/ft 4.2 kg/m	5 lb/ft 7.5 kg/m	
Actual Breaking Strength	6,400 lb 2,909 kg		12,500 lb 5,669 kg	16,500 lb 7,500 kg	





Height	18 in / 0.46 m	24 in / 0.61 m	36 in / 0.91 m
Freeboard	8 in / 0.2 m	10 in / 0.25 m	12 in / 0.3 m
Draft	10 in / 0.25 m	14 in / 0.36 m	24 in / 0.61 m
Section Lengths	25, 50 & 100 ft / 7.6, 15 & 30 m - Special lengths to order		
Base Fabric	Algaecide Treated Belting		
Floats	High Impact Resistant HD Polyethylene Floats		
Ballast	Block Weights		

ELASTEC PermaFence contains floating materials such as oil, weeds and trash. PermaFence containment boom is capable of withstanding long-term deployment in arduous conditions. The high density polyethylene floats are very simple to maintain and can be easily removed from the heavy-duty belt for cleaning. PermaFence is supplied in different sizes and section lengths to suit the application or installation.





ELASTEC AirMax is a versatile inflatable oil containment boom manufactured from high quality urethane fabric. Optional foam panels in the air chambers provide added integrity. AirMax booms are compact and quick to deploy, and they are offered in a range of sizes to suit water conditions. This boom features a high buoyancy-to-weight ratio that delivers excellent wave conformance and oil retention.

Model	River	Harbor	Nearshore	Offshore	Open Water	Deep Sea
Connector Height	17.5 in / 0.44 m	24 in / 0.61 m	38 in / 0.96 m	50 in / 1.27 m	57 in / 1.44 m	75 in / 1.9 m
Operation Height	16 in / 0.40 m	22 in / 0.56 m	32 in / 0.81 m	43 in / 1.1 m	48 in / 1.22 m	64 in / 1.63 m
Freeboard	8 in / 0.20 m	8 in / 0.2 m	14 in / 0.35 m	18 in / 0.46 m	20 in / 0.51 m	24 in / 0.61 m
Draft	8 in / 0.20 m	14 in / 0.35 m	18 in / 0.46 m	25 in / 0.64 m	28 in / 0.71 m	40 in / 1.01 m
Section Length	50 ft / 15 m	100 ft / 30 m (other on request)				
Bottom Tensions	5/16 in / 8 mm Galv. Chain		3/8 in / 9.5 mm Galv. Chain	1/2 in / 12.7 mm Galv. Chain		
Weight	1.56 lbs/ft 2.30 kg/m	1.85 lbs/ft 2.75 kg/m	2.75 lbs/ft 4.1 kg/m	4.25 lbs/ft 6.3 kg/m	4.45 lbs/ft 6.6 kg/m	4.9 lbs/ft 7.3 kg/m



V-SWEEP

ELASTEC V-Sweep is for single ship operations with an outrigger arm mounted with an articulated joint. This system allows for a single vessel to conduct containment operations. AirMax V-Sweep is a versatile inflatable oil containment boom sweep manufactured from high quality urethane fabric. RubberMax V-Sweep is a more robust nitrile rubber boom.



This durable boom has excellent resistance to the stresses and strains of operations.

ELASTEC RubberMax is constructed from synthetic rubber compounds, vulcanized with multiple plies of high tensile fabric.

RubberMax is manufactured in modern calendaring facilities using the latest production techniques. This boom features multiple plies of reinforcing fabric encapsulated in a synthetic oil and weather-resistant rubber.

Built according to international standards, our rubber and production process quality is verified using ASTM and international test procedures.

Model	1000	1300	1500	1600	1800
Connector Height	39 in / 1.0 m	51 in / 1.3 m	59 in / 1.5 m	63 in / 1.6 m	71 in / 1.8 m
Operation Height	31 in / 0.79 m	43 in / 1.1 m	47 in / 1.2 m	50 in / 1.2 m	59 in / 1.5 m
Freeboard	14 in / 0.36 m	17 in / 0.44 m	20 in / 0.5 m	22 in / 0.5 m	24 in / 0.6 m
Draft	17 in / 0.43 m	26 in / 0.66 m	28 in / 0.7 m	28 in / 0.7 m	35 in / 0.9 m
Bottom Tension	Galvanized Steel Chain				
Weight	4.4 lbs/ft 6.6 kg/m	6.0 lbs/ft 8.9 kg/m	6.7 lbs/ft 9.9 kg/m	7.3 lbs/ft 10.8 kg/m	9.1 lbs/ft 13.6 kg/m



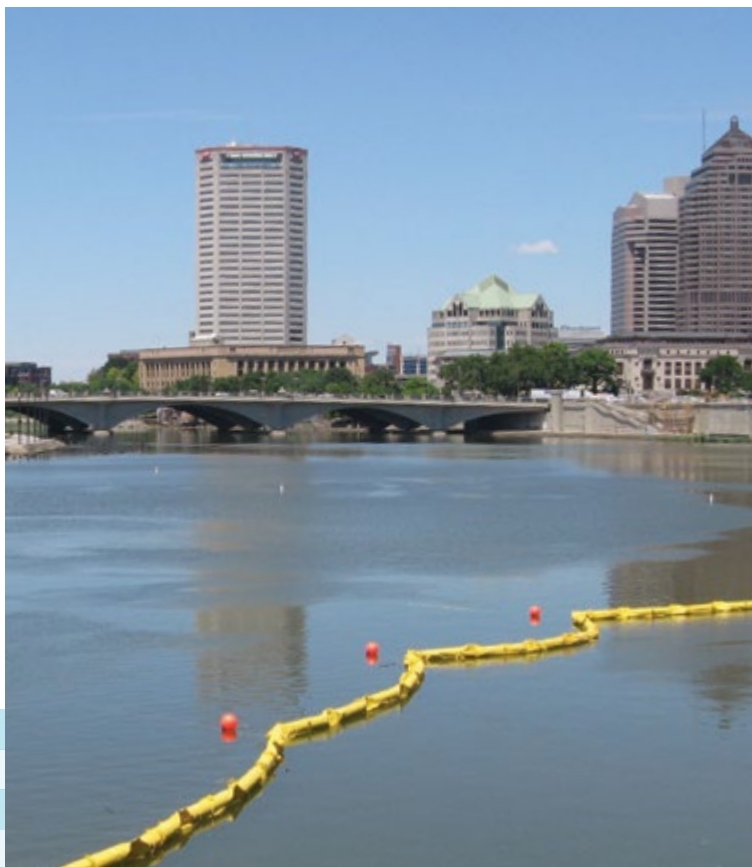
SILTMAX

ELASTECH SiltMax turbidity curtains are floating barriers designed to control sediment and runoff at construction sites. SiltMax silt curtains are designed for easy deployment and meet the requirements of the Federal Clean Water Act (National Pollutant Discharge Elimination System (NPDES) Phase II).

- Dredging Operations
- Marine Construction
- Remediation Projects
- Intake / Outflow Protection
- Fish Screens
- Pollution Control Curtains

SiltMax Staked Turbidity Curtain

SiltMax I Economy	Calm Water Use
SiltMax I DOT	Calm Water Use
Siltmax II DOT	Moving Water Use
SiltMax III DOT	Moving Water and Tidal Use





TYPE I

For use in inland waterways, ELASTEC Type I Stillwater Screen is specifically manufactured for turbidity control in calm conditions. Stillwater Screen is offered with impermeable and permeable options.

TYPE II

ELASTEC Type II Fastwater Screen is a durable premium curtain for rivers, streams and lakes where moving water, winds and waves are present.

TYPE III

If your project requires a deep curtain with strength for difficult conditions and flows, ELASTEC Ruffwater Screen Type III is the barrier of choice.



TRASH TRAP

The Trash Trap is an innovative solution to capture trash and debris caught in storm water runoff. In the installation to the right, a custom-built variation of ELASTEC PermaFence was mounted between two I-beams. Using the ELASTEC Tidal Compensator, the PermaFence can rise up and down with the water level. Flowing water travels under the boom, while floating debris is diverted into the collection trap.



TRASH BOOM

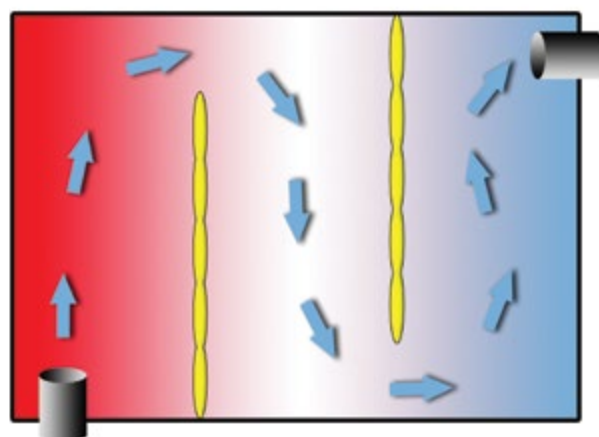
Elastec offers a range of durable booms that can be deployed to contain floating trash and debris. The boom pictured below has been deployed continuously since 2006 to keep floating debris from entering a wetlands reservoir.





Baffle systems slow the flow of wastewater in treatment lagoons to allow more time for sediment fall-out.

- One piece baffle lengths up to 2,500 ft / 762 m reduce on-site assembly.
- Completely enclosed flotation and underwater tension cable for strength and low wind resistance.
- No stitching. All seams are thermal dielectric welded.
- Flow-through reinforced resistant windows to meet varying flow rate criteria.



BOOM ACCESSORIES

www.elastec.com



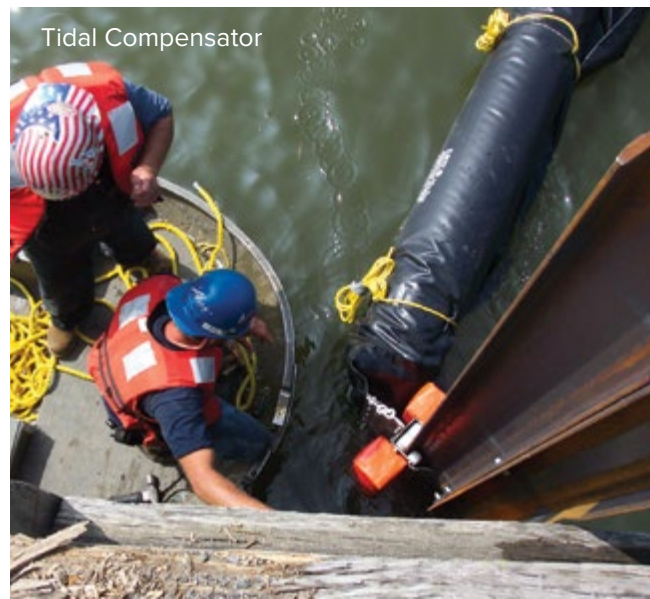
Boom Standoff Unit



Boom Pile Tether

MOORING ACCESSORIES

Elastec offers many mooring accessories, including Boom Standoff Unit, Tidal Compensator and Boom Pile Tether.

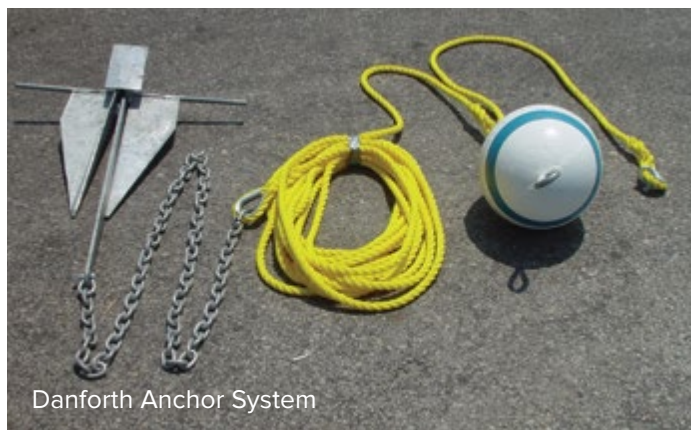


Tidal Compensator

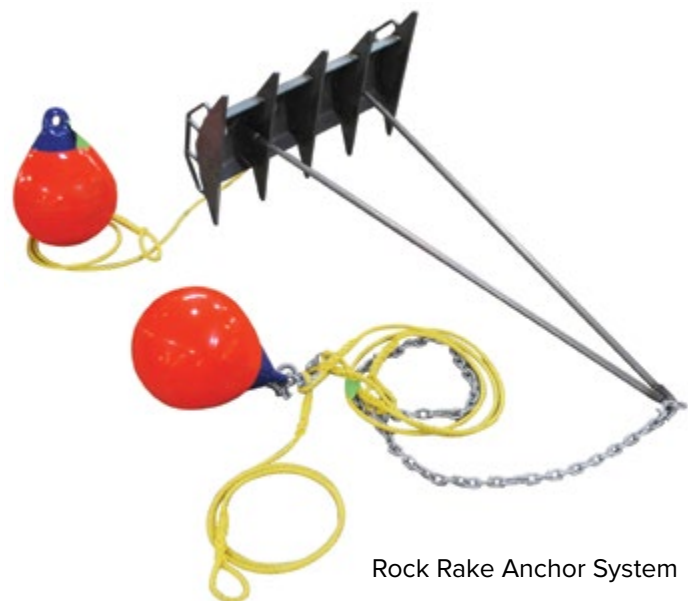
ANCHOR SYSTEMS

Elastec offers multiple styles of anchor systems, including:

- Danforth
- Rock Rake
- TerraTwist



Danforth Anchor System



Rock Rake Anchor System



TerraTwist Anchor System

BOOM REELS AND STORAGE

Elastec offers several options for boom deployment and storage:

- Aluminum Reels
- Steel Reels
- Trailer Mounted Reels
- Boom Racks
- Custom Boom Containers
- Modified Shipping Containers



ADDITIONAL ACCESSORIES

- Boom Lights
- Buoys and Markers
- Donut Piling Float
- Towing Assemblies
- Magnetic Connector
- Solar Markers
- Tow Bridles
- Fabric Repair Kits



FLEXIBELT

ELASTEC FlexiBelt is a unique spring loaded floating containment boom designed to be used by ships during refueling and product transfer operations.





MULTI-PURPOSE CRAWLER CARRIER

The ELASTEC Multi-Purpose Crawler Carrier can transport heavy equipment on soft ground and terrain. Hydraulic power is integrated to allow skimmers and pumps to be operated without having to transport separate power packs.

- Towing
- Carrying Heavy Loads
- Powering Hydraulic Equipment
- Integrated Crane
- Tilt Bed
- Low Ground Footprint
- Hydrostatic Drive
- Carry up to 6,600 lbs / 3,000 kg



MULTI-PURPOSE ATV

The ELASTEC Multi-Purpose All Terrain Vehicle is fitted with a diesel engine that has been adapted to operate auxiliary hydraulic equipment. The vehicle can also be supplied with tracks, davit, skimmer or submersible pump.





AMPHIBIOUS CRAWLER CARRIER

The Amphibious Crawler Carrier is a heavy-duty vehicle for oil spill response in swamps, snow and remote areas. With 8,000 lbs / 3,629 kg pulling capacity, the hydrostatic track systems easily traverse rough or slippery terrain. The ACC seamlessly transitions from land to water with dual hydraulically-driven props.





ALL TERRAIN VACUUM

The ELASTEC All Terrain Vac is a high powered vacuum system that is mounted on ATV towable chassis. The unit is ideal for working in remote areas such as beaches, pipelines and industrial locations. The All Terrain Vac can recover a wide range of liquids, oils and sludges with solids up to 2 inch / 50 mm diameter.

The ELASTEC All Terrain Vacuum Tank (right) is designed for cleanup operations in remote locations or where smaller quantities of liquids need to be recovered. It can be used with the ELASTEC MiniVac, All Terrain Vac or other vacuum pumps.





Shown with optional Hopper System

MINIVAC

The ELASTEC MiniVac is a mobile, portable vacuum that can recover a wide range of liquids, oils and sludge with entrained solids up to 2 inch / 50 mm diameter. The diesel-driven high capacity pump quickly generates a vacuum inside standard drums, hopper unit or 110 gallons / 400 litre tank.

ELASTEC DrumIt (right) is a drum filling vacuum head with auto shut off. Connect DrumIt to any vacuum system or truck to intercept liquids or solids. The lid assembly is constructed of stainless steel and fitted with 3 inch / 76 mm or 4 inch / 101 mm camlock fittings. The sight glass shows the operator when the drum is full. The vacuum bypass valve can be adjusted to control the vacuum levels on the drum.



PACS (PORTABLE AIR CONVEYANCE SYSTEM)

www.elastec.com



PACS1000 498

Model	PACS1200 SKID	PACS1200 230	PACS1000 339	PACS1000 360 ATEX	PACS1000 424 WC	PACS1000 498	PACS1000 770
Tank Capacity	1,200 gallons / 4,540 litres		1,000 gallons / 3,785 litres				
Chassis	Skid	Trailer					
Engine	25 hp / 18 kW Diesel	20 hp / 15 kW Gas	17 hp / 13 kW Diesel	25 hp / 18 kW Diesel*	25 hp / 18 kW Diesel		34 hp / 25 kW 48 hp / 36 kW Diesel
Vacuum Pump Type	Air Cooled Blower	Air Cooled Vane	Air Cooled Blower	Air Cooled Vane ATEX Approved	Water Cooled Vane	Air Cooled Blower	
Vacuum Pump Capacity	770 cfm / 21,800 lpm	230 cfm / 6,500 lpm	339 cfm / 10,200 lpm	360 cfm / 9,600 lpm	424 cfm / 12,000 lpm	498 cfm / 14,100 lpm	770 cfm / 21,800 lpm
*with spark arrestor and overspeed protection							

ELASTEC PACS is designed for removing liquids, solids and sludge from land or water. Less expensive than vacuum trucks, the PACS is approved for highway towing and does not require a special driver's license. Models with integral hydraulics can run oil skimmers and pumps, as well as lift the tank vertically to dump contents.



PACS (PORTABLE AIR CONVEYANCE SYSTEM)

www.elastec.com



PACS1000 360 ATEX



High pressure water pump (hydraulic) and saddle tank are available.



PACS1200 Skid mounted system.



MEDIBURN

ELASTEC MediBurn is the safe and simple solution for the disposal of infectious and pathological waste for medical facilities. An improved control system provides up to 50% more fuel savings. New safety features and multi-lingual displays are important enhancements for global use. The MediBurn destroys up to 66 lbs/hr / 30 kg/hr of medical waste.

MediBurn is ready to use upon delivery with minimal training. It features easy to operate, state-of-the-art controls, automatic pre-set cycle control for startup and shutdown. Dual chamber combustion with high exhaust temperatures in excess of 1,832°F / 1,000°C ensure clean burning of materials.

MediBurn uses modulating burners and under-air technology to minimize fuel consumption. Simply connect the unit to 220 volt power supply, fill the diesel tank and the MediBurn is ready to use.



SMARTASH

ELASTEC SmartAsh is a portable, small-batch incinerator that meets U.S. EPA requirements for burning non-hazardous refuse. Simply load a 55 gallon / 208 litre open head steel drum, light the load and clamp on the lid. A whirlwind of fire and intense heat is created inside the drum, burning refuse without smoke or smell. Once combustion is complete, only 3% ash remains.

The ELASTEC OilAway Attachment is an optional accessory for the SmartAsh Cyclonic Barrel Burner® that injects waste oil into the barrel during the burn cycle.



DRUG TERMINATOR

ELASTEC Drug Terminator is used by law enforcement, military and medical facilities for the disposal of evidence drugs and take-back medicine programs. Drug Terminator is wood or charcoal-fired. Two high velocity electric blowers create a cyclone of intense heat, eliminating drugs almost immediately. The volume of material is reduced to an average of 3% ash. Non-combustible drug paraphernalia is sterilized by heat and can be disposed in municipal waste.





Keeping Our World Clean

1309 West Main, Carmi, IL 62821 USA

926 County Road 1350 N, Carmi, IL 62821 USA

401 Shearer Blvd., Cocoa, FL 32922 USA

211 N. Market St., Fairfield, IL 62837 USA

Tel: +1 (618) 382-2525 Fax: +1 (618) 382-3610

Email: elastec@elastec.com

www.elastec.com

